



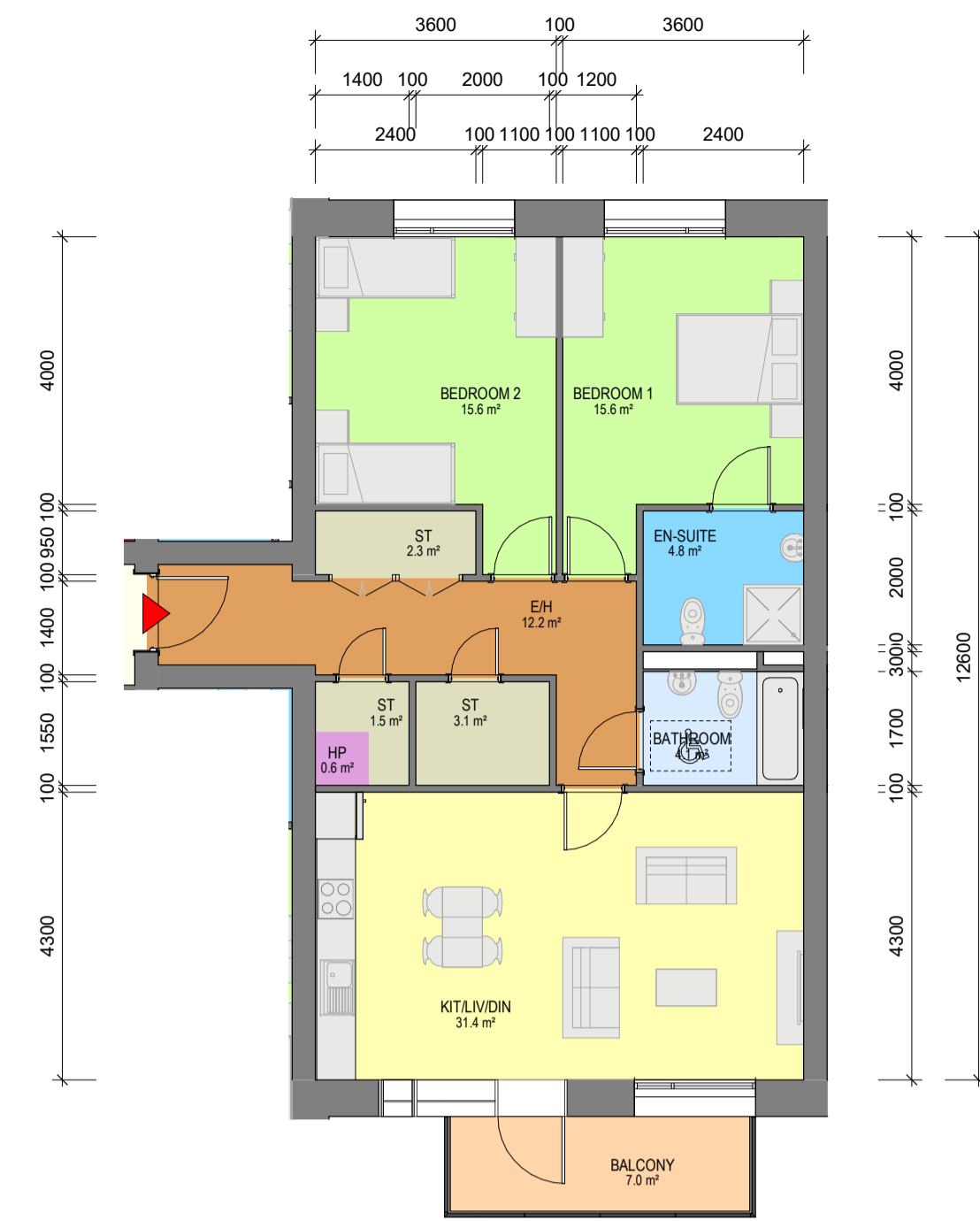
**1** Apartment Type 2M  
1 : 100

- 2 BED, 4 PERSON APARTMENT
- NET INTERNAL AREA (NIA)  
Areas shown in plan
- GROSS INTERNAL AREA (GIA) : 77.6sqm



**2** Apartment Type 2N  
1 : 100

- 2 BED, 4 PERSON APARTMENT
- NET INTERNAL AREA (NIA)  
Areas shown in plan
- GROSS INTERNAL AREA (GIA) : 84.28sqm



**3** Apartment Type 2O  
1 : 100

- 2 BED, 4 PERSON APARTMENT
- NET INTERNAL AREA (NIA)  
Areas shown in plan
- GROSS INTERNAL AREA (GIA) : 95.5 sqm

APARTMENT ROOM LEGEND	
	BEDROOM
	KITCHEN / DINING / LIVING
	BATHROOM
	ENSUITE
	STORE
	ENTRANCE / HALL
	BALCONY & WINTER GARDEN
	HP

SYMBOL LEGEND	
	APARTMENT ENTRANCE
	1200mm x750mm TURNING SPACE

Rev	Date	Description	Issued By
P05	21/03/2022	ISSUED FOR PLANNING	EB
P04	17/12/2021	ISSUED FOR REVIEW	EB
P03	12/11/2021	ISSUED FOR REVIEW	EB
P02	10/09/2021	ISSUED FOR PRE-PLANNING	EB
P01	01/09/2021	ISSUED FOR REVIEW	EB

Project Stage

# PLANNING

Client:

Tiznow Property Company Limited  
(Comer Group Ireland)

Project:

RESIDENTIAL DEVELOPMENT  
The Former Cork Warehouse Company Site,  
Cork South Docks, Cork City

Drawing Title:

PROPOSED APARTMENT TYPES - BLOCK J  
2 BED TYPES

Drawn	Checked	Paper Size	Scale	Date
VF	EB	A1	1 : 100 @A1	09/03/21

Project No.	Drawing No.	Classification	Revision
PE21055	5003		P05

File Name  
PE21055-CWO-10-ZZ-DR-A-5003

Status:

**A1 - Authorized and accepted for planning stage**



No.1 Sarsfield Quay, Dublin 7, D07 R9FH  
t: 01 518 0170 e: admin@cwoarchitects.ie  
Dublin | Cork | Galway | London | UK & Europe +  
www.cwoarchitects.ie

Please consider the environment before printing this sheet