



1 Apartment Type 2A - Duplex - Part 1

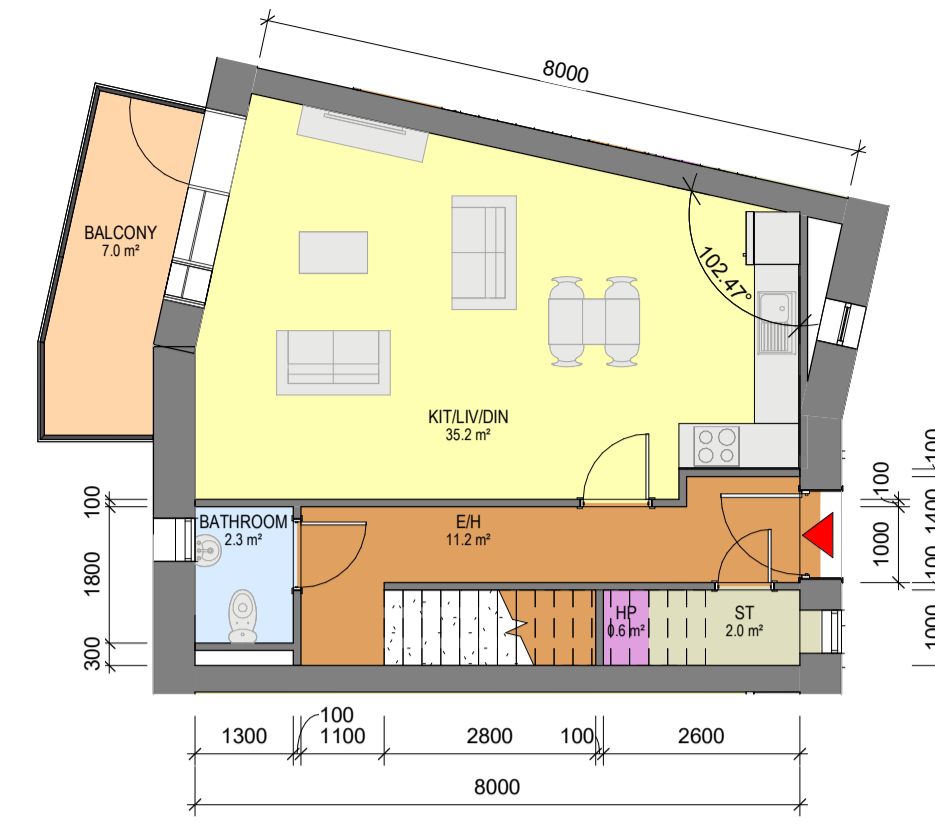
1 : 100



2 Apartment Type 2A - Duplex - Part 2

1 : 100

- 2 BED, 4 PERSON APARTMENT
 - NET INTERNAL AREA (NIA)
 Areas shown in plan
 - GROSS INTERNAL AREA (GIA) : 96.8sqm



3 Apartment Type 2B - Duplex - Part 1

1 : 100



4 Apartment Type 2B - Duplex - Part 2

1 : 100

- 2 BED, 4 PERSON APARTMENT
 - NET INTERNAL AREA (NIA)
 Areas shown in plan
 - GROSS INTERNAL AREA (GIA) : 108.4sqm

APARTMENT ROOM LEGEND	
	BEDROOM
	KITCHEN / DINING / LIVING
	BATHROOM
	ENSUITE
	STORE
	ENTRANCE / HALL
	BALCONY & WINTER GARDEN
	HP

SYMBOL LEGEND	
	APARTMENT ENTRANCE
	1200mm x750mm TURNING SPACE

Rev	Date	Description	Issued By
P05	21/03/2022	ISSUED FOR PLANNING	EB
P04	17/12/2021	ISSUED FOR REVIEW	EB
P03	12/11/2021	ISSUED FOR REVIEW	EB
P02	10/09/2021	ISSUED FOR PRE-PLANNING	EB
P01	01/09/2021	ISSUED FOR REVIEW	EB

Project Stage

PLANNING

Client:

Tiznow Property Company Limited
 (Comer Group Ireland)

Project:

RESIDENTIAL DEVELOPMENT
 The Former Cork Warehouse Company Site,
 Cork South Docks, Cork City

Drawing Title:

PROPOSED APARTMENT TYPES - BLOCK J
 2 BED - DUPLEX TYPES

Drawn	Checked	Paper Size	Scale	Date
VF	EB	A1	1 : 100 @A1	08/13/21

Project No.	Drawing No.	Classification	Revision
PE21055	5005		P05

File Name
 PE21055-CWO-10-ZZ-DR-A-5005

Status:

A1 - Authorized and accepted for planning stage